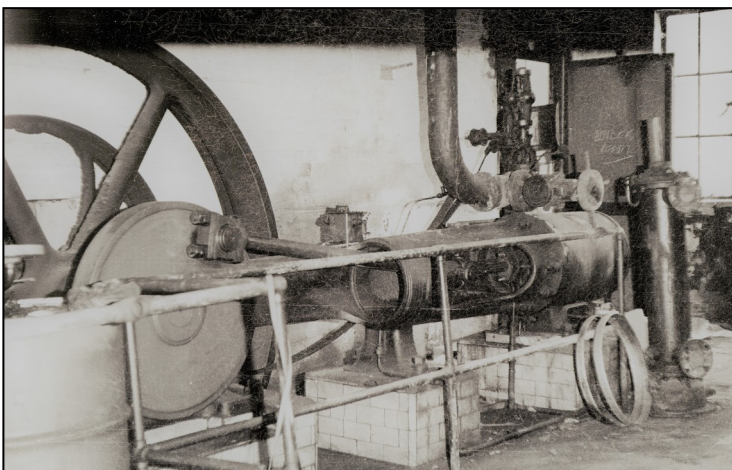
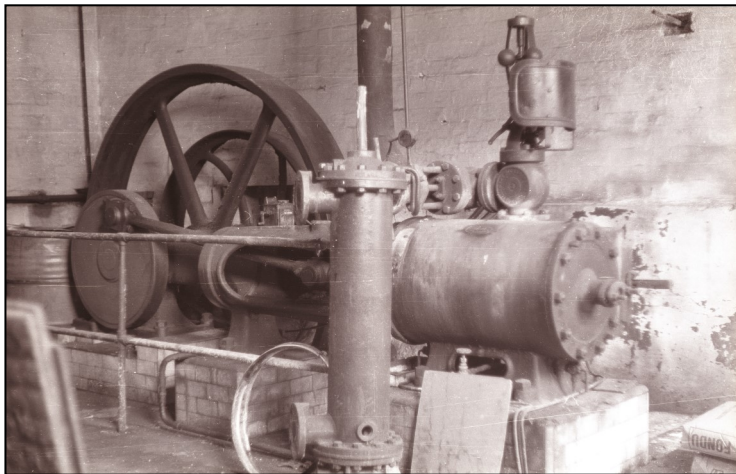


The engine that powered the works at Hereford's Sanitary Laundry



Horizontal steam engines were used to provide power in 19th century mills and factories. One engine could drive many looms or machines by the use of overhead line shafts and belts.

This single cylinder Tangye steam engine dates from the end of the 19th century and was used at the City's Sanitary Laundry where it provided power for many different processes. It was rescued from a local scrapyard but was incomplete so could not be put back into working condition. Its governor and auto cut off mechanism can, however, be seen in the Tangye House (which is immediately behind the engine).



The Hereford Sanitary Laundry Co Ltd was formed in 1896 and operated on Ledbury Road in Hereford until the company was voluntarily wound up in 1975.

By the 1930's, the company had branch laundries in Leominster and Ludlow and employed over 400 staff. It also had and a network of over 20 agents across Herefordshire, but also in parts of Wales, Shropshire and Monmouthshire arranging laundry collections.

Its main competition in Herefordshire came from sanitary laundries based in Ross and Presteigne.

The engine was operated in a green and white tiled enclosure and its belts and shafting were used to power the laundry's washers and rotary ironers.